
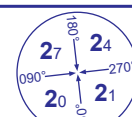
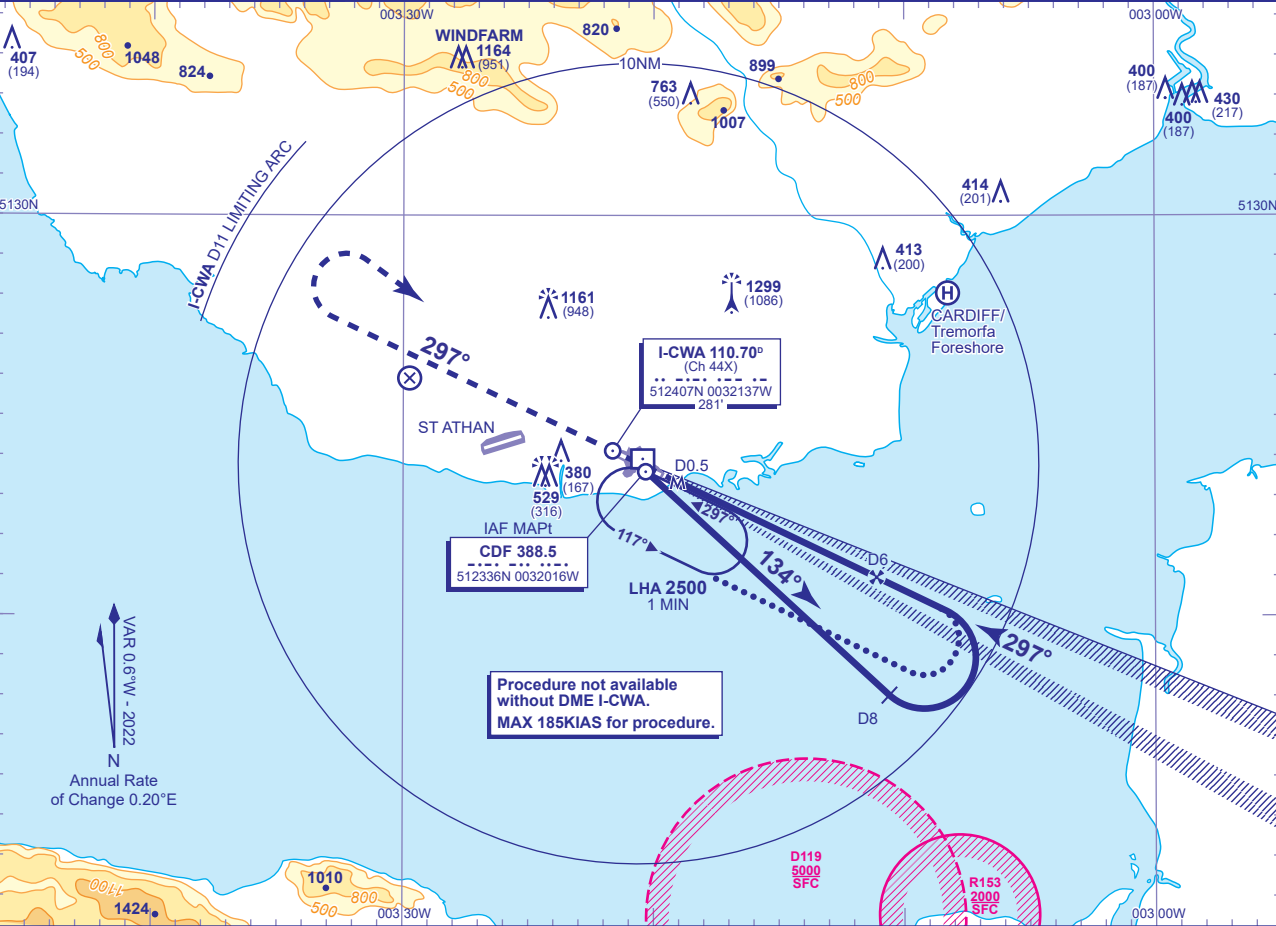


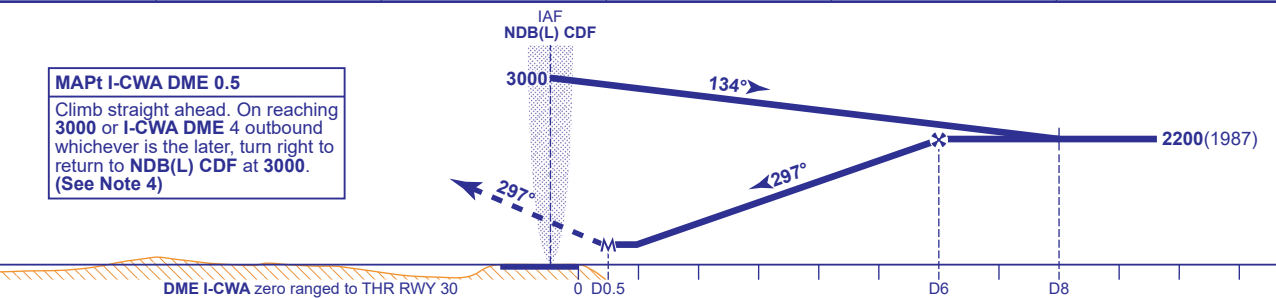
INSTRUMENT APPROACH CHART - ICAO

CARDIFF
LOC/DME/
NDB(L) z
RWY 30
(ACFT CAT C,D)

 MSA 25NM NDB(L) CDF	 MSA 10NM NDB(L) CDF	APP 119.155, 125.855	CARDIFF APPROACH	AD ELEVATION 220	LOC/DME NDB(L) z RWY 30 (ACFT CAT C,D)	
		TWR 133.105	CARDIFF TOWER	THR ELEVATION 213		
		RAD 125.855	CARDIFF RADAR	OBSTACLE ELEVATION 1299 AMSL (1086) (ABOVE THR)		
		119.155 (LARS)				
ATIS 132.480		CARDIFF INFORMATION	BEARINGS ARE MAGNETIC		TRANSITION ALTITUDE 6000	



RECOMMENDED PROFILE Gradient 5.2%, 320FT/NM					
DME I-CWA	5	4	3	2	1
ALT(HGT)	1860(1647)	1540(1327)	1220(1007)	900(687)	580(367)



Aircraft Category		C	D	Rate of descent	G/S KT	160	140	120	100	80
OCA (OCH)	Procedure	500(287)	500(287)		FT/MIN	850	740	640	530	420
VM(C)OCA (OCH AAL)	Total Area	1560(1340)	1690(1470)							
	South of RWY 12/30	920(700)	920(700)							

ALTERNATIVE PROCEDURE EXTENDED HOLDING PATTERN
Extend outbound leg of the NDB(L) CDF holding pattern to I-CWA DME 8 descending to 2200(1987) then proceed as for main procedure.

- NOTE 1** Subject to ATC approval, aircraft inbound to NDB(L) CDF and receiving DME I-CWA may descend to 3000 after passing I-CWA DME 10.
2 ATC will authorise crossing of EG D119 before start of procedure.
3 Timed procedure not available without radar monitoring.
4 Aircraft to remain within I-CWA DME 11 during the missed approach turn in order to be contained within Cardiff controlled airspace. If unable to comply, notify ATC.

CHANGE (8/21): APP, TWR, RAD FREQUENCIES REVISED.